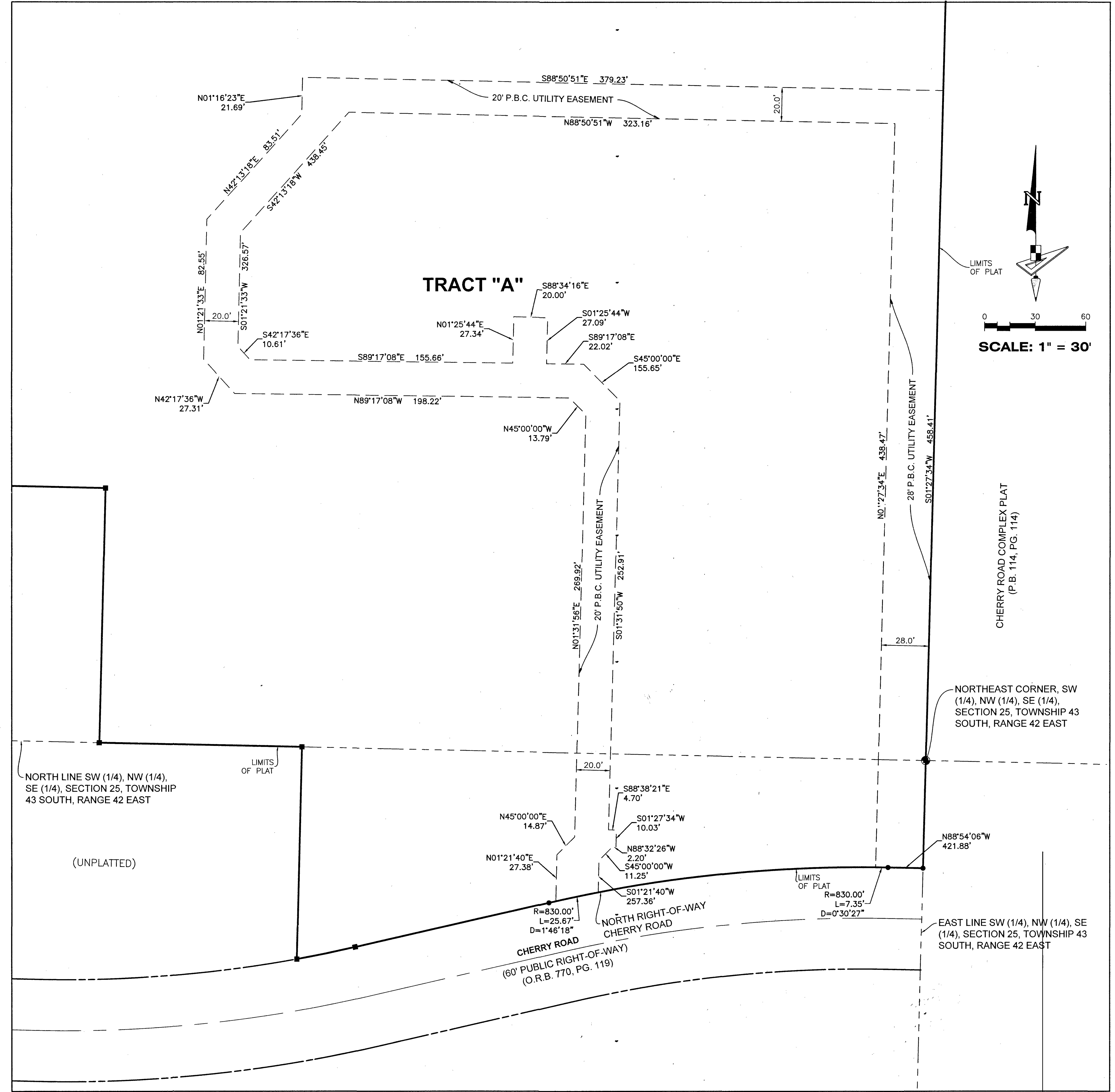


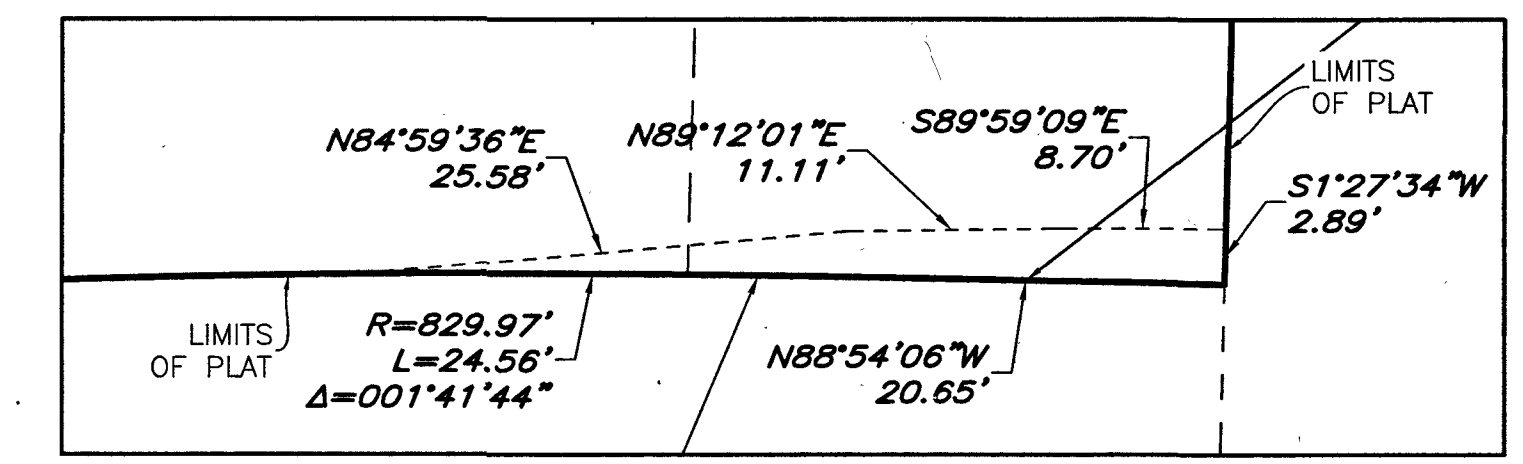
CHERRY ROAD PLAZA, M.U.P.D.

BEING A PARCEL OF LAND IN THE NORTHWEST QUARTER OF THE SOUTHEAST QUARTER OF SECTION 25, TOWNSHIP 43 SOUTH, RANGE 42 EAST, PALM BEACH COUNTY, FLORIDA

DETAIL "B" - P.B.C. UTILITY EASEMENT
SCALE 1" = 30'



- STATE PLANE COORDINATE NOTES:
- ALL DISTANCES ARE GROUND UNLESS OTHERWISE NOTED
 - SCALE FACTOR= 1.0000377
 - COORDINATE SYSTEM = 1983 STATE PLANE TRANSVERSE MERCATOR PROJECTION, COORDINATES SHOWN ARE GRID COORDINATES
 - ZONE = FLORIDA EAST ZONE
 - DATUM = NAD 83-1990 ADJUSTMENT
 - GROUND DISTANCE X SCALE FACTOR = GRID DISTANCE
 - LINEAR UNIT = U.S. SURVEY FEET
 - PLAT BEARINGS = GRID BEARINGS, NO ROTATION



DETAIL "A" - SIDEWALK EASEMENT
SCALE 1" = 10'

THIS INSTRUMENT PREPARED BY
 LUIS J. ORTIZ, P.S.M.
 LS7006 STATE OF FLORIDA.
 GEOPPOINT SURVEYING, INC.
 4152 WEST BLUE HERON BOULEVARD, SUITE 106,
 RIVIERA BEACH, FLORIDA 33404
 CERTIFICATE OF AUTHORIZATION NO. LB7768



4152 W. Blue Heron Blvd.
 Suite 106
 Riviera Beach, FL 33404
 Phone: (561) 444-2720
 www.geopointsurveying.com
 Licensed Business Number LB 7768